

# Memo

**Project:** National Paediatric Hospital

**Report Type:** Summary of Dust Monitoring Results

**Period of Monitoring:** October 2017

## Introduction

The requirement for Dust Monitoring on site is laid out in the Project Environmental Impact Statement (EIS) that would have been submitted as part of the Planning Permission for the project. A number of monitoring points around the perimeter of the site are used to record dust levels. The location and number of dust monitors may vary throughout the project depending on activities on site.

## Dust Monitoring.

The monitors are examined monthly and the levels of dust recorded are compared to a dust limit of 350mg/m<sup>2</sup>/day set out in the Project EIS. The monitoring points are monitored on a 'trigger level' basis - so if a predetermined level of dust is exceeded the Main Contractor shall review work processes and modify as required to reduce the level of dust generated.

## Number of Monitors on Site:

Eleven

## Location of Monitors:

Location of dust monitoring points for October (D1, D2, etc.) can be seen in Figure 1.

## Observations:

The dust monitoring for this period began on 3<sup>rd</sup> October and ran to 31<sup>st</sup> October – a period of 29 days. Nine of the eleven dust monitors on site showed levels of dust lower than the levels specified in the Project EIS. Two of the eleven dust monitors showed levels higher than the levels specified in the Project EIS.

Dust Monitoring Point D2 recorded the highest reading and is located at the boundary of the site with the South Circular Road. The dust deposition rate reported was 1200mg/m<sup>2</sup>/day which is 342% of the maximum deposition rate limit specified in the Project EIS.

Dust Monitoring Point D8 recorded the second highest reading and is located to the rear of O'Reilly Avenue. The dust deposition rate reported was 1100mg/m<sup>2</sup>/day which is 314% of the maximum deposition rate limit specified in the Project EIS.

The lowest reading for dust deposition was recorded at Dust Monitoring Point D1 which is located on the boundary of the site at Brookfield Road with a dust deposition rate of 30mg/m<sup>2</sup>/day which is 8.6% of the maximum deposition rate limit specified in the Project EIS.

## Previous Readings:

Dust Monitoring Point D2 (shown in Figure 1) is located approximately at the same location as dust monitoring point D3 from reports issued prior to September 2017 (shown in Figure 2). Previous readings for the Dust Monitor at this location were:

# Memo

Month (2017)	Deposition Rate at South Circular Road (mg / m <sup>2</sup> / day)
April	155.7
May	156.9
June	152.5
July	229.5
August	151
September	450
October	1200

The October reading at South Circular Road at Monitor D2 (see Figure 1) shows an increase on September's reading from 450mg / m<sup>2</sup> / day to 1200mg / m<sup>2</sup> / day. The BAM report reports that '*excessive dust may have been generated by the operation of a piling rig*'. The report also notes that the location of the monitor is '*in the proximity of Brookfield Road and dust levels may have impacted through traffic and Heavy Goods Vehicle movements*'.

# Memo

Dust Monitoring Point D8 (shown in Figure 1) was a new monitoring point established on site in September. Prior to September there was a monitor either side of this location which were identified as D5 and D6 in previous reports. The September reading for Dust Monitoring point D8 and previous readings for locations D5 and D6 are tabulated below:

Month (2017)	Deposition Rate at D5 (mg / m <sup>2</sup> / day)	Deposition Rate at D6 (mg / m <sup>2</sup> / day)	Deposition Rate at D8 (mg / m <sup>2</sup> / day)
April	173	104.5	Monitoring point not established
May	137.1	87.5	Monitoring point not established
June	305.5	Not Available	Monitoring point not established
July	84.1	38	Monitoring point not established
August	46.9	133.6	Monitoring point not established
September	Monitoring point replaced	Monitoring point replaced	2700
October	Monitoring point replaced	Monitoring point replaced	1100

The October reading shows a decrease on September's readings for monitor D8 from 2700mg / m<sup>2</sup> / day to 1100mg / m<sup>2</sup> / day but it should be noted that it is still above the limit set out in the Project EIS. The BAM report reports '*that excessive dust may have been generate by tunnel excavation works in the proximity of D8*' during the monitoring period.

# Memo

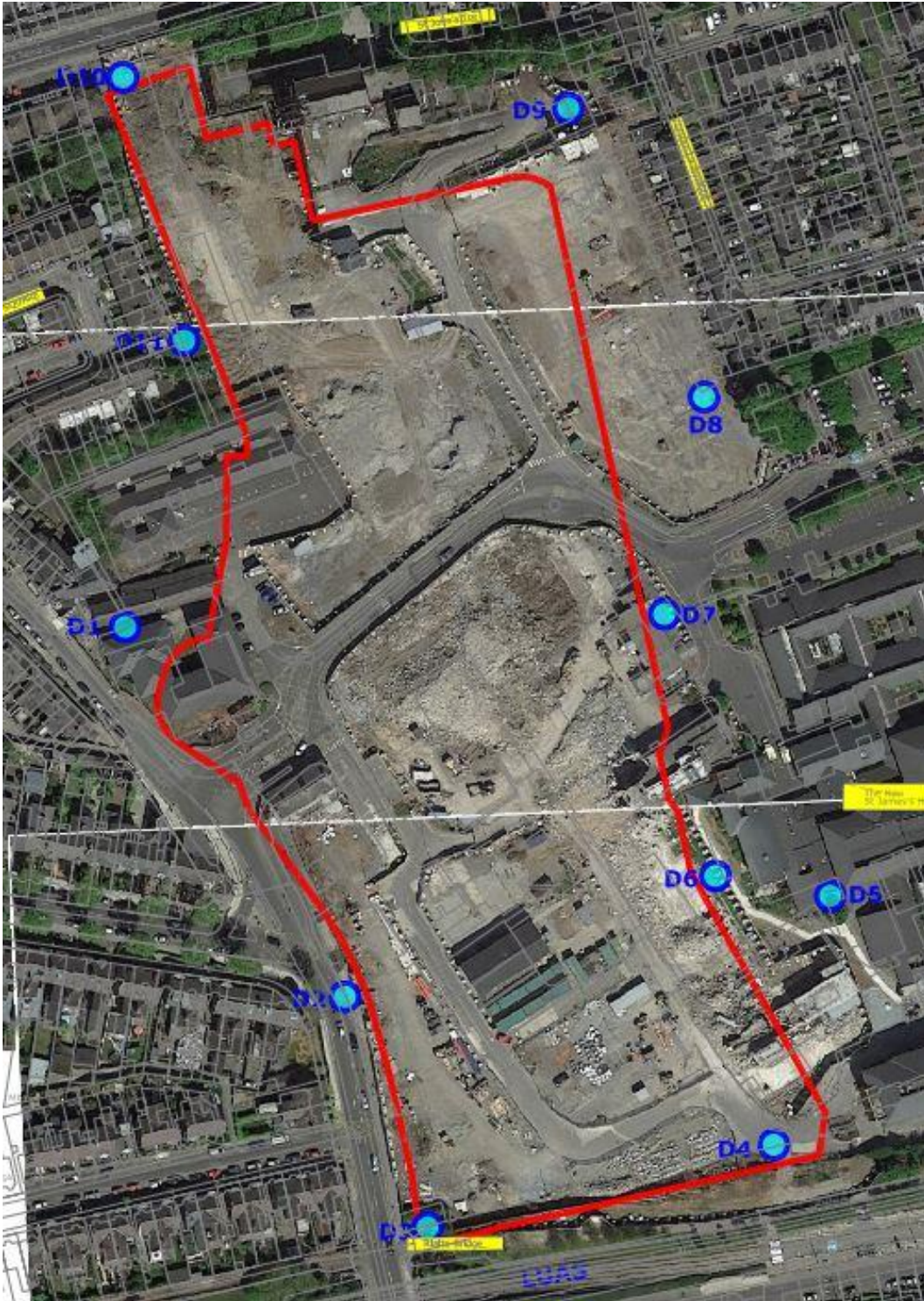


Figure 1. Location of Dust monitors on site (October 2017).

# Memo



Figure 2. Previous location of Dust monitors on site (April 2017 to August 2017).

End.