

**Project:** National Paediatric Hospital

**Report Type:** Summary of Dust Monitoring Results

**Period of Monitoring:** 5<sup>th</sup> November 2018 – 3<sup>rd</sup> December 2018.

## Introduction

The requirement for Dust Monitoring on site is laid out in the Project Environmental Impact Statement (EIS) that would have been submitted as part of the Planning Permission for the project. A number of monitoring points around the perimeter of the site are used to record dust levels. The location and number of dust monitors may vary throughout the project depending on activities on site.

## Dust Monitoring.

The monitors are examined monthly and the levels of dust recorded are compared to a dust limit of 350mg/m<sup>2</sup>/day set out in the Project EIS. The monitoring points are monitored on a 'trigger level' basis - so if a predetermined level of dust is exceeded the Main Contractor shall review work processes and modify as required to reduce the level of dust generated.

## Number of Monitors on Site during Monitoring Period:

Eleven.

## Location of Monitors:

The location of dust monitoring points since May 2018 (D1, D2, etc.) can be seen in Figure 1. Previous dust monitor locations for the period September 2017 to April 2018 and April 2017 to August 2017 and are shown in Figures 2 and 3 respectively for reference.

## Observations:

The dust monitoring period for November extends from 5<sup>th</sup> November 2018 – 3<sup>rd</sup> December 2018. (Results for October included testing up to and including 5<sup>th</sup> November, meaning all working days on site have been captured in the dust monitoring results)

Over this period, all monitors were tested on a monthly basis i.e. once.

Works on site during this monitoring period include, but are not limited to:

- Demolition of old utility tunnel and excavating material from site at O'Reilly Avenue/Energy Centre.
- Excavation of materials from site and construction of new road at the hospital.
- Steel works for capping beam and excavation of material from site near Cameron Square.
- Construction of basement slab and excavation works at South Circular Road.
- Excavation Works at Mount Brown.

Overall, all 11 dust monitors on site showed levels of dust below the levels specified in the Project EIS, 350mg/m<sup>2</sup>/day.

# Memo

Dust Monitoring Point D3 recorded the highest reading of the 11 dust monitors and is located near the Rialto Luas Stop. The dust deposition rate was approximately 31% of the limit specified in the Project EIS. During this monitoring period, construction of basement slab and excavation works were carried out in this area which could have resulted in relatively larger dust deposition in this area.

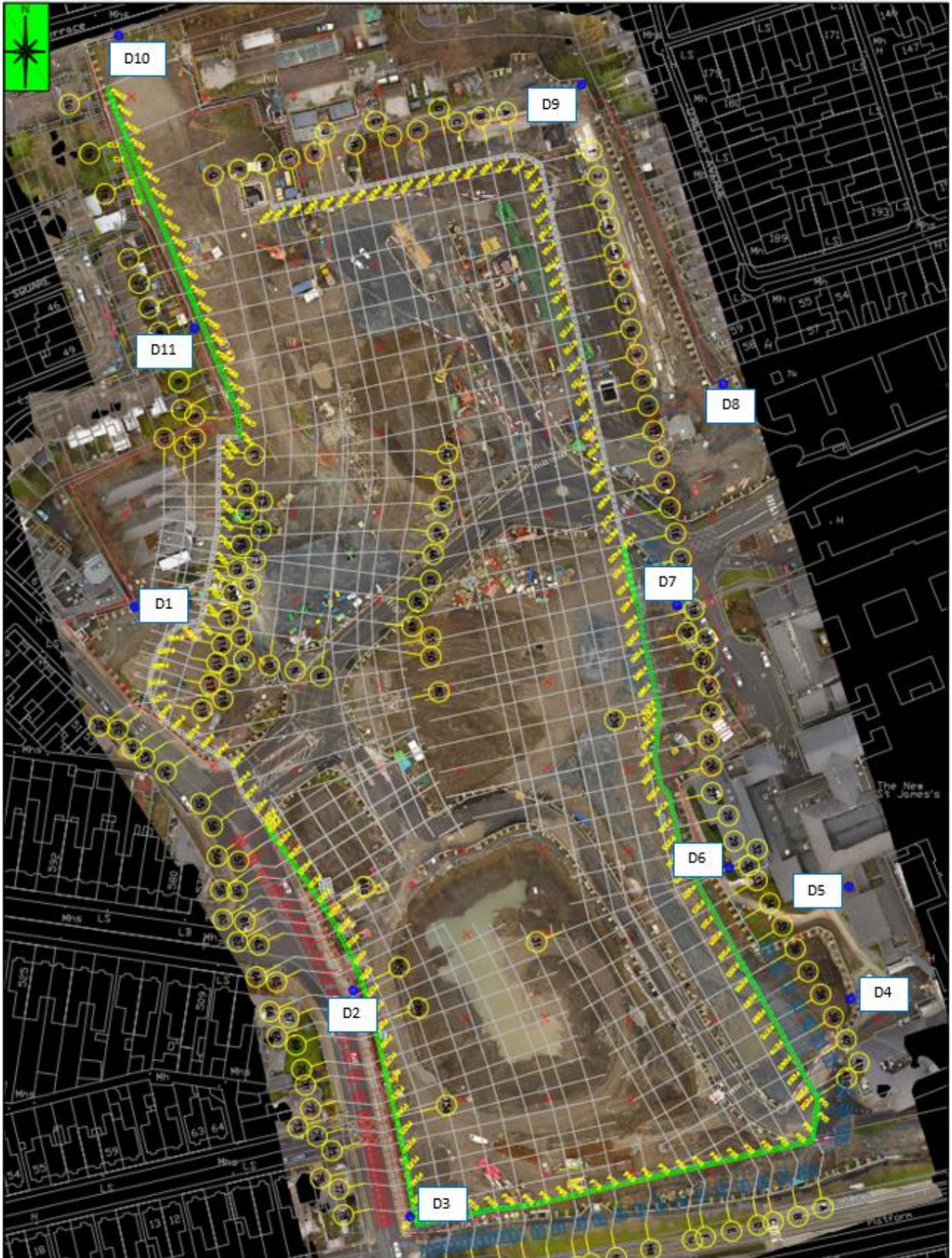


Figure 1. Location of Dust monitors on site (May 2018).

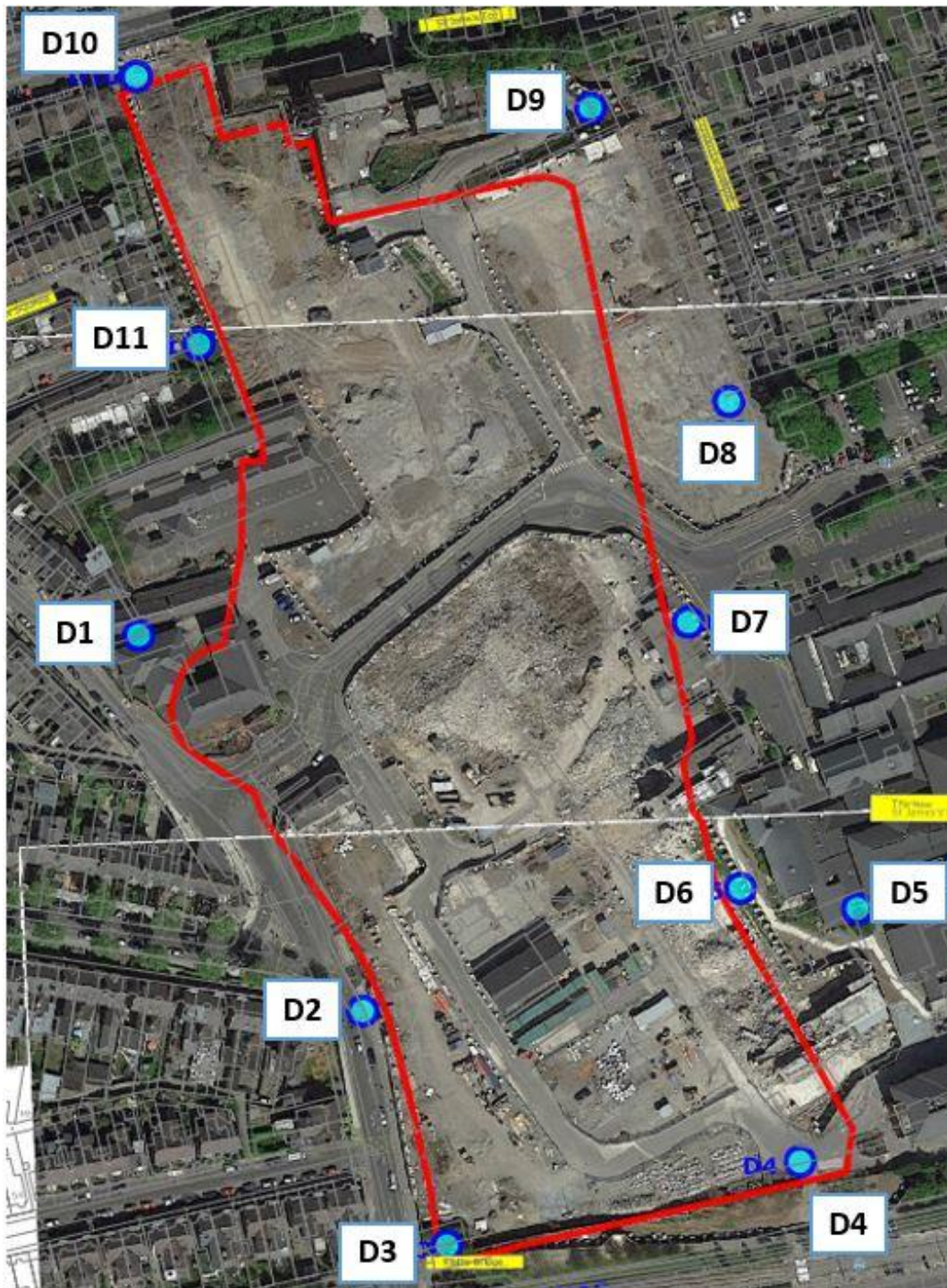


Figure 2. Location of Dust monitors on site (September 2017 – April 2018).



Figure 3. Previous location of Dust monitors on site (April 2017 to August 2017).