

[Residents Alliance Group](#) DEC 2020

## Contents

[What's Happening on the Site](#)

[Derogations and Late night work](#)

[Linear Park](#)

[Parking and the lack of traffic management plan](#)

[Community Awards](#)

[Contribution Levy Scheme](#)

## It's getting there, what's happening on the Site

Currently all the windows are in the "fingers" along the southern and western side of the hospital, overlooking SCR and James Walk, the external cladding is in place and the scaffolding will be down by the end of the year.

The frame of the hospital will be completed by the end of the year and most external work is due to be completed by St Patrick's Weekend when work will begin to move inside.

### Arrangement over the Christmas .

The site will close on the 18<sup>th</sup> of December and reopen on the 4<sup>th</sup> of January. However

there will be a presence on the site throughout the period for safety and security reasons.

BAM expect to be back to full complement of staff (1200) after the New Year subject to covid restrictions.

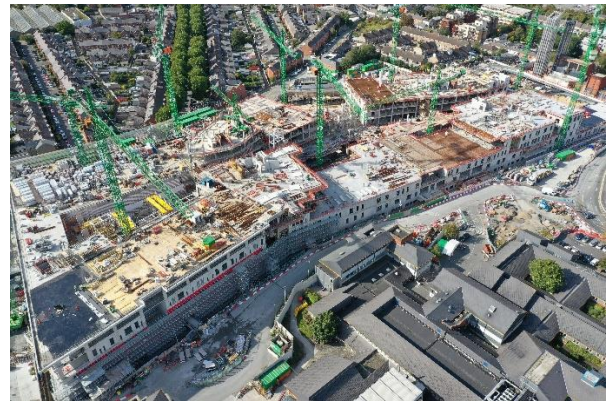


Figure 1 Summer 2020 St James's Side of the NCH

The Rialto entrance to the children's Hospital is expected to become operational on the New Year much to the relief of residents at the current entrance points on Brookfield. Gate 3 will be replaced by this new gate which will be deeper in site thereby greatly reducing the disturbances experienced by residents adjacent to this entrance.

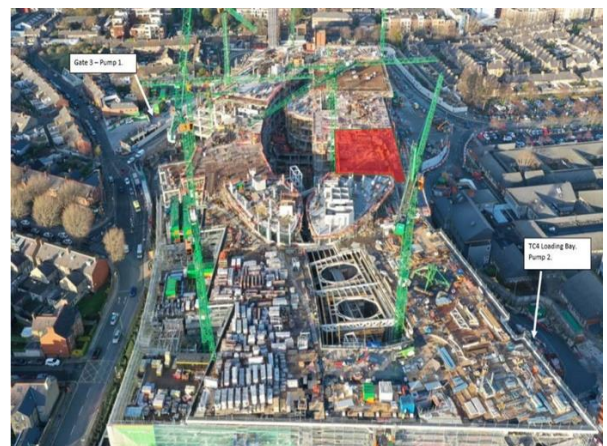


Figure 2 Autumn 2020 Rialto Luas Stop view of NCH

The majority of lorries however will continue to enter and leave the site through the Rialto Gate contrary to the original plan.

## Derogations Late Night Work

BAM will work late for two nights this week and next to finish the large concrete pours to complete the frame of the building. Other pours will continue during the New Year but not to the extent of recent pours.

An Bord Pleánala granted the NCH developer permission for a 65 hour week, 5 hours above the normal DCC permissible working week.

In addition, DCC Planning agreed to BAM receiving three derogations per week to “finish” concrete pours, consisting of quiet work to mid night.

Over 12 months ago the Residents Monitoring Committee agreed to BAM doing other quiet “crane work” on those nights where they had DCC derogations, bringing the working week on site to 80 hours..

After the lock down BAM went to DCC looking for additional hours over and above the 80 hours already provided for, effectively by passing the local Monitoring Committee of which they were members.

Residents objected to DCC giving any additional hours to BAM without first using the established local structures. DCC Planning upheld resident objections and rescinded derogations granted and directed BAM to seek the approval of residents prior to applying to DCC.

Resident Representatives acknowledge the formal recognition by DCC of the local arrangement between residents, developers, local DCC office and the builder.

DCC have also reviewed their protocols regarding derogations for the NCH site and issued a set of revised conditions around derogations. Residents have welcomed these subject to one or two clarifications.

The revised protocols can be viewed [here](#).

Residents have and will continue to work with NCH ,BAM and DCC on the Monitoring Committee to ensure that the hospital development continues as rapidly as possible while at the same time taking account of residents that live adjacent to the site.

Check the RAG site for all BAM public work notices

[Calendar of Work Notices](#)

## Linear Park

The Linear Park consultation process continues with the on line Feedback survey for interested persons active until the 4<sup>th</sup> January,

To feedback on the propose plan, take the on-line survey [Here](#)

If you are unable or do not wish to use the on-line survey you can leave your views in the “Feedback” post box in the F2 centre.



The findings of the consultation process can be viewed and full report down loaded from [here](#)

## Contribution Levy Scheme

The proposed public meeting on the DCC Development Contribution Scheme with public representatives has been postponed until circumstances for public meetings change.

## Parking and the lack of a Traffic Management Plan .

Parking continues to be one of the most contentious issues in the area and will continue to be so into the future. The Resident Monitoring Committee were addressed by St James's Mobility Manager Barry McKenna in November when he informed the meeting that the goals outlined for the St James's mobility plan are unattainable. He told the meeting that virtually all public transport use by staff has ceased and staff have returned to private car use and to a lesser extent more have taken up bikes but at far lower rate than expected. The impact of this can be seen on the streets adjacent to the hospital campus where any parking spaces are been taken up by hospital staff.

This situation is exacerbated by construction workers also using the free parking and the pay and display spaces around the site.

Both St James's Hospital and BAM are directed by An Bord Pleanana to ensure that their staff parking requirements will not encroach on the adjacent streets and the evidence is clear that both St James and BAM are major contributors to the emerging parking chaos in the area.

The Rialto Residents have initiated a local plebiscite to introduce Pay and Display and that process could take up to 6 months and in the meantime residents will have to endure noisy and inconsiderate motorists parking at their homes at all hours of the night and day..

Dublin City Council need to review their traffic management plan for the area and take account of a number of factors including the actual current traffic load as opposed to the inaccurate projections made in 2016. The substantial development taking place currently and into the foreseeable future in the area to ensure that realistic transport management systems are in place including parking.

Finally the impact of the [BUS Connect](#) on the area is the final factor that needs to be addressed. The proposed bus spine running down Mount Brown and the three bus routes going through the hospital two of them coming thorough Rialto will impact hugely on traffic flow and pedestrian and cyclist safety.

[back](#)

## Community Awards

The organising committee are undertaking a community consultation on the 2020 BAM Community Benefit Grants Scheme to get people's feedback and suggestions on the themes. To share your views and you're your feedback you can fill out the on line survey.

Feedback of 2020 Community Awards [here](#)

## Questions and Answers

If you have any questions or issues you want raised with the NCH or the contractors in relation to the build please forward them to the e-mail address below and we will raise them at the next [Residents Monitoring Committee](#) meeting on the 14<sup>th</sup> January 2021

### Feedback

**"If you inform, they will reform"**

