



[Residents Alliance Group](#) OCT 2022

Contents

- [Work Plan over the next quarter](#)
- [Linear Park Cycle Route](#)
- [The Linear Park and Suir Bridge](#)
- [Traffic Management Workshop 2](#)
- [Change in Personnel](#)
- [End of Phone Help line](#)

BAM expect to be handing over a completed hospital to Children’s Health Ireland (CHI) in early 2024 then there will be up to 6 months of operationalising the hospital before it open to the public in late 2024 significantly later than the original 2021 completion date.

Work Plan over the coming quarter

Most of the building work has moved inside and when sections are completed they are “commissioned” and are ready for hand over, one such section is the South Fingers due for completion by end of the month.

South Fingers along the LUAS track are finished and are due to be commissioned (by BAM) by the end of this month.

For the upcoming quarter work will continue to include landscaping of the various green areas within the structure this includes waterproofing , preparation and planting. The main roof is completed on the east side and

will be completed on the west side by November.

The BAM Green and Orange offices are due to be removed from the top of the building on the West side and the office space will be found inside the building at the end of October.

Cranes continue to be removed, of the original 10 cranes there are now 5 in operation and another should be removed before Christmas and followed by 2 others (6,2) in the new year. The two remaining cranes (7,4) will probably be in operation to the end of the project..... 2024 .



Road Works in James’s

These works consist of the partial upgrade of the Western Staff Car Park and local upgrade of the main Campus Road to include new roundabout, larger bus stops, new bus shelters, new paths and kerbs, traffic barriers, and new landscaping, there will be removal of some existing trees in compliance with the ABP planning permission-

These works commenced on the 24th September and will be carried out in 3 phases.

- The 1st phase of works relating to the Car park area will take place from

Saturday 24th September to 14th October.

- The 2nd phase of works relating to the Campus Road is due to commence on the 17th Oct to the 26th December.
- The 3rd phase of works, similar to phase 1 & 2 and relating to the Speech Therapy area, will be carried out in early 2023 and more information will be issued closer to the time.

It was agreed at the RMC on the 28th of September that all residents living in an area being impacted by site works should receive notice prior to that work commencing and all notification should be door to door.

Boundary Fencing

Boundary Fencing along the North Road – backing onto Cameron Square.

Engagement to Commence with Cameron Square Resident Representatives in early October.

Work expected to commence in November or December which is dependent on the lead time of Materials.

Public Realm Works

All three junctions entering the James's hospital complex are subject to public realm works in the coming months

SIAC on behalf of DCC are resurfacing parts of SCR .

The entrances to the Main hospital and the Mount Brown entrance to the NCH and the Steps up to Cameron Square are all due to be have public realm works undertaken in early 2023, this work includes signage, works agreed with planning and works to accommodate the Bus Corridor.

These plans will be discussed in a workshop format with RMC and others towards the end of 2022, dates are to be agreed.

O' Reilly Avenue

The building of the new hospital has impacted on residents around the site differently but none have suffered as much as those on O Reilly Avenue or for so long.

For five years residents have had a section of their gardens removed with a steel fence boundary and beyond that a large 20 ft hoarding along the boundary of the site. See picture below.



Figure 1 Back garden O'Reilly Avenue

As well as living with this constant presence of the build, many residents also suffered serious structural damage to their houses.

After a long court case that was settled last November that was followed up by an agreement on works to be done by May of this year with a start date end of August Nothing has happened.

Questions raised by ORA rep at the recent RMC meeting was assured by the NPDHB that the internal 20ft boundary will be removed and this will allow the builder appointed to carry out the remedial work to access ORA houses from the 1st of November.

The NPDHB also informed the meeting that the remedial works will also include connecting houses on ORA to a new sewer along the rear of their gardens.

From the residents point of view there has been poor if no feedback on the schedule of works .

The NPDHB were advised by the RMC that residents should be shown the planned sequence of works, planned contacts and updates and be given a timeline for same.

Family Accommodation Unit

The tender for building the unit has as yet not been issued and work on the unit is unlikely to commence until 2023, but when is unclear.

Visit the Site

NPDHB are organising site visits for people to view the work in progress.

Details and contacts will be available in the near future.

Linear Park -Cycle Route

One of the main blocks to get a full design for the Linear Park has been the route of the planned cycle route from Suir Road to Thomas street. The proposed work has been issued and is now available for the public to respond..

Suir Road Cycle route to Thomas St

- Grand Canal View
- Linear Park
- James's Walk
- Wards Lane
- Marrowbonelane
- Thomas Court

The proposed cycle route appears to consist of new signs along the existing path from Rialto Bridge to Suir Bridge for people to be mindful of each other.

The crossing from one section of the Linear Park to the other is illustrated in the photo below with new traffic lights and reorganisation of the junction.



Figure 2 Rialto Bridge

The proposed cycle route will then run along James's Walk on the road in both directions while the road itself will become one way , running east to west towards Rialto Bridge.



Figure 3 James's Walk Rialto St

The current footpaths will be retained and there will be no parking on the Luas side of the road and limited parking on the other side.

Tender for construction is due late 22 and work to commence early 23.

DCC Info Leaflet on Suir Cycle [Here](#)

The route is available for public consultation now at this link.

[Kilmainham to Thomas Street Interim Scheme from Suir Road to Thomas Street - Dublin City Council - Citizen Space](#)

The Linear Park and Suir Bridge

Works at the basin St end that were discussed at the public meeting in June have been held up pending some unearthed stone to be assessed for potential archaeological significance.

The works are due to re-commence shortly.



RED LINE BOUNDARY

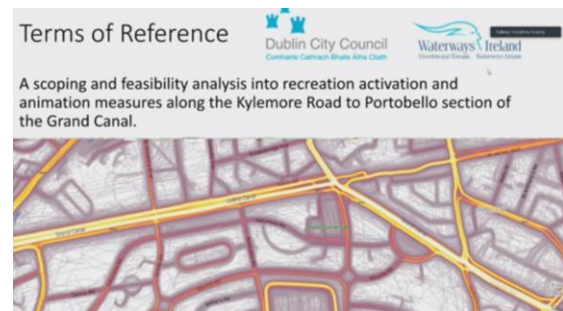
See further details on planned at;

[St. James's Linear Park - Phase 2 September 2022](#)

For more information on Linear Park

- [Linear Park Update Nov 21 Here](#)
- [Linear Park Draft Masterplan Here](#)

SUIR Bridge



The Waterways Ireland report was discussed at the last area sub committee meeting.

Suggesting 7 nodal development points along the stretch of canal reviewed, one of the 7 nodes is Suir Bridge. No time scale included and it appears that a voluntary model is being suggested whereby a volunteer group will come in to operate water based activity at this base.

Again questions need to be asked about joined up thinking in our public services and the continued reliance for service delivery on volunteers. There is an onus of existing public services to harness existing service to provide community services. There are several youth projects in the immediate area, there are several schools in the area and there are DCC Sports officers in the area surely between all of them a service could be provided whereby children and young people could avail of the node and at the same time access it through the Linear Park either by foot or along the planned cycle way.

Activities first.

- **Facilitated:** third party provision of water and environment programmes and equipment, 2-3 year period.
- **Programme:** introduction to paddle-sports (kayaking, SUP, Dragon), seasonal.
- **Progression:** slalom, canoe polo, flotillas, races, other places, year round. Local instructor training.
- **Infrastructure:** kayak steps, slalom poles, canoe polo nets, kayak storage.
- **Structure:** existing community structures, community led clubs, adult participants and local volunteers/instructors. Community Blueway.

Cabra Kayak Club Model (Royal Canal)

See Area Committee

[DCC South Area meeting](#)

[-Travel Unit and Waterways Ireland](#)

(Waterways Ireland @ 46 mins)

Workshop on Traffic Management Plan

Probably the greatest issue facing the community over the coming years will be the impact of a hospital the scale of National Children's Hospital on the surrounding community in terms of movement and access.

The original traffic management plan drawn up as part of the NCH Planning Application in 2015 is in need of a review and update (See [EIS Traffic Plan](#)).

As part of the planning permission St James Campus Mobility Plan (including the NCH) were to review and update the implementation of their mobility plan with DCC and for a variety of reasons this has not happened.

In response to this situation the Residents Monitoring Group are hosting a workshop in October where the issues that need to be addressed in a Traffic Management Plan can be discussed and explored including;

- needs to take account of the new developments in the Dublin 8 and projected increase traffic flow.
- Assessment of the impact of cycle ways on traffic flow
- The impact of the Bus Connect with a proposed Bus Gate at Mount Brown (submitted to planning in June).
- Parking management options for inside and outside of the complex
- A review of the revised St James's Complex mobility plan

The workshop plans to invite the various parties with responsibilities for different aspects of traffic management together to discuss the impending opening of the National

Children's Hospital and the plans in place to ensure appropriate access to the hospital.

See Mobility Plan [Here](#)

Change in Personnel

Garry Keegan the community Liaison person with BAM since the start of the build has finished and his role has been taken on by Chole McHugh who will incorporate the community Liaison role with her on-going role of Manager of Community Benefit.



24/7 Phone line

The 24/7 phone line has been discontinued. The reason to finish the service was down to lack of usage.

As always, should you have any issues or concerns about these or other works in relation to the site, contact:

- Derek Behan (087-696-7723) site Senior Security Officer, or
- Chole Mc Hugh on cmchugh@bam.com

Live Calendar of Work Notices

Check the RAG website for all BAM published work notices

[Calendar of Work Notices](#)